

# PREQUALIFICATION



**GOLDEN ARCH**  
DECOR L.L.C.

TURN KEY INTERIOR FIT OUT  
JOINERY, CEILINGS & DRYWALL

Dear Sirs,

Thank you very much for allowing us to introduce our company.

We are an ISO: 9001:2008 certified company and in to interior fit out projects with large in-house joinery, gypsum & painting divisions.

The company is established in 2006, since then we have been part of many well known projects like - Burj-Khalifa, Dubai Metro Stations, Shore Line apartments - Palm Jumeirah, Dubai Festival city, and many five star hotels like Intercontinental Hotel, Crown plaza hotel, Royal Mirage - Palm Jumeirah, Pulman Hotel, Al Ghurair Arjaan by Rotana, Al Bustan Complex - Abudhabi, JA Ocean View Hotel – JBR, Meydan Beach Club - JBR, Ajman Kempinski etc.

Also we have associated with a number of high end brand showrooms for – Ferrari & Maserati - Shk Zayed Rd, Gucci, Emporio Armani, BVL Gari, Crate & Barrel, Emilio Pucci etc and Restaurants for Armani Café, Nafoorah Restaurant, Tribes Restaurant, Carlucious and corporate offices for Ericsson, Blackberry, GE offices, Farglory, Meraas, Clyde & Co, Bin Draï – Park Place Tower, HSBC, Bank Of America, RBS and Hospitals for City Hospital, Mediclinic, Welcare and done many luxury villas, private palaces & facilities etc

All our team managers are with minimum 15 years of GCC experience in their trades and we have well equipped in-house facilities like – Joinery, Gypsum & Painting divisions with a well trained team of 70+ workers.

Also we have maintained very clean financial & bank records and maintained friendly relation with all our associates by paying them in time and ensured mutual benefits to all who worked for us.

With that, we assure you the best possible services and high quality products at an affordable price and within the time limits.

Kindly go through the following pages to know further about our resources & facilities, the projects executed, location map, license details, ISO certificate etc

Hoping to associate with you in your future projects.

Thanking You,



Davy Jos - Managing Director  
**050 5589 621 / 055 89 11 858**

## COMPANY DETAILS

### **Registered Office**

### **GOLDEN ARCH DÉCOR LLC**

P O Box 16278  
Ajman, UAE.

Tel: +971 6 7487 685

Fax: +971 6 7487 684

E-mail: [sales@goldenarch-me.com](mailto:sales@goldenarch-me.com)

[info@goldenarch-me.com](mailto:info@goldenarch-me.com)

Website : [www.goldenarch-me.com](http://www.goldenarch-me.com)

### **Type of Company**

Golden Arch Décor LLC is an ISO certified Private Limited Ajman based Company with facilities to carry out production and installation of Interior Fit-Out works in UAE.

### **In –house Divisions**

Joinery & Furniture Division  
Ceilings & Drywalls & Painting Division

### **Our Team**

Management	3
Administrative	5
Technical / supervision	7
Workers	80

### **Facilities**

10,000 sft Joinery Factory with all modern machinery.  
3,500 sft Paint Booth + drying area  
2,500 sft Storage Area  
2,500 sft GRG Casting - Facility

### **Joinery Facilities**

Veneer Pressing Machine, Veneer Cutting Machine, Veneer Stitching Machine, Edge banding Machine, Calibrating Sanding Machine, Boring Machines, Circular Saws, Band saws, Planer Machine, Thicknesser Planers, Router machines, chain mortiser. Finishing Spray Booth (High-end car paint booth) Sealer / Primer booth (Dry booth)

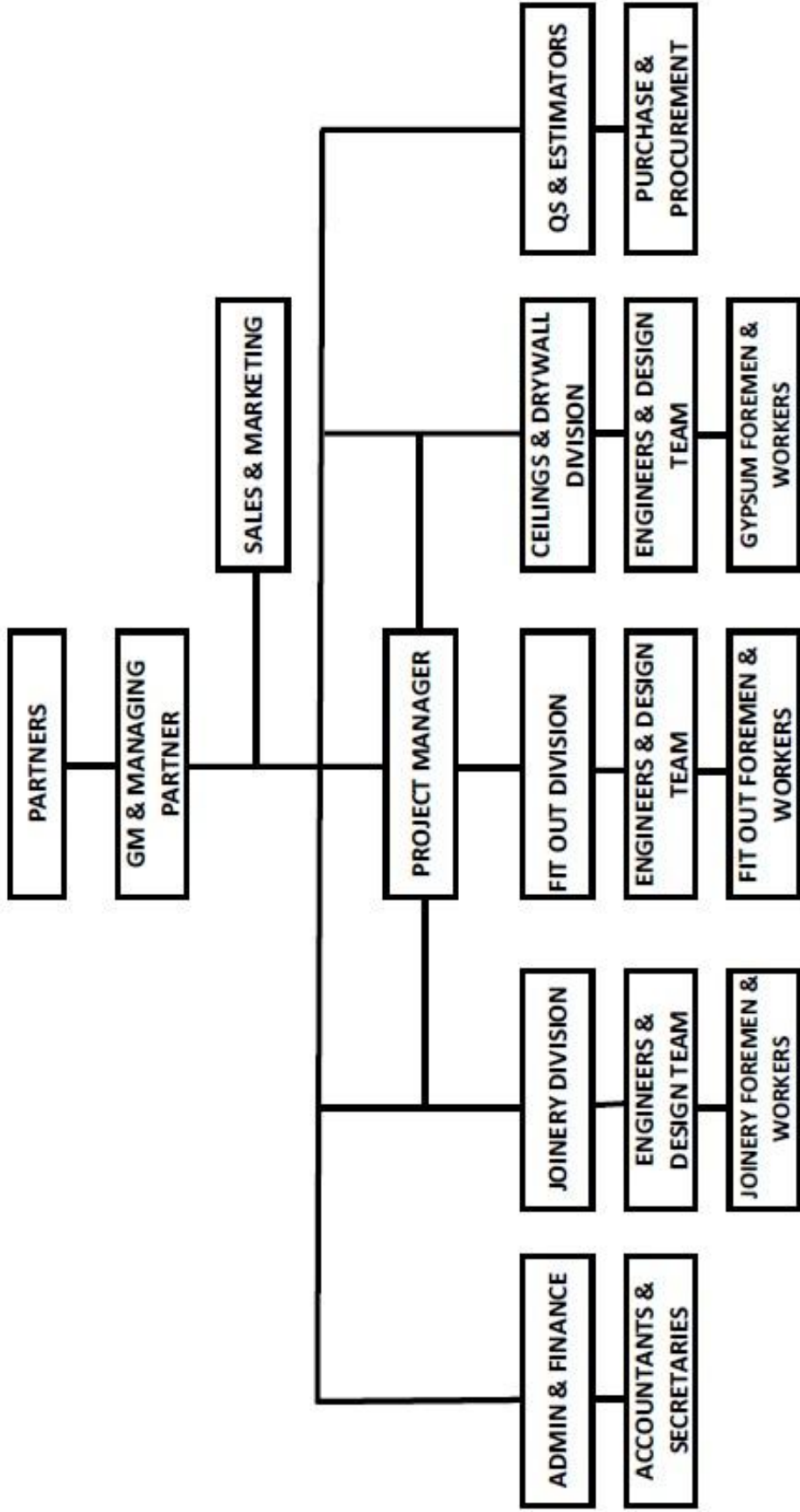
### **Associates**

We have different teams for fast tracking the local authority approvals and many reliable trade sub contractors to assist us to deliver the projects in required time & quality.

### **Financial Status**

Financially we are well placed with clean bank records and maintained very good reputation by ensuring mutual benefit and good payment history to our employees, suppliers and subcontractors, hence always received whole hearted support from our associates and employees in managing the projects.

# GOLDEN ARCH DÉCOR LLC - ORGANIZATION CHART





UNITED ARAB EMIRATES  
AJMAN EMIRATE

دائرة البلدية والتخطيط - عجمان  
Municipality & Planning Dept.-Ajman

دولة الإمارات العربية المتحدة  
إمارة عجمان

ECONOMIC LICENSE DEPT.

إدارة التراخيص الاقتصادية

تجديد

رخصة تجارية

سجل تجاري رقم : 35153

رقم الترخيص : 43900

الجنسية رقم الجواز

أسماء أصحاب الترخيص

الامارات

إسم الشركة : القوس الذهبي للديكور ( ذات مسئولية محدودة)

الإسم التجاري : القوس الذهبي للديكور (ذ.م.م)

Trade Name : GOLDEN ARCH DECOR(L.L.C).

الشكل القانوني : شركة ذات مسئولية محدودة

نوع النشاط : اعمال تنفيذ التصميم الداخلي

5724658

الهند

إسم المبرور : دافى شريان كاندات جوس

المؤجر /محمد اكرم محمد ابراهيم

العنوان : الجرف الصناعية 1

شيرة رقم : 3 تاريخ إنتهاء العقد : 2015/06/12

المستودع/م: الجرف/المؤجر:محمد اكرم محمد ابراهيم

صندوق بريد : 16278

فاكس : 7487684

هاتف : 7487685

تاريخ الإصدار : 2006/06/13

تاريخ الإنهاء : 2015/06/12

ع / مدير عام البلدية

EXPO 2020  
DUBAI UNITED ARAB EMIRATES



إكسبو 2020  
دبي الإمارات العربية المتحدة

مركز الحميدية م / 640

تاريخ الطباعة : 2014/06/15

بتاريخ : 2014/06/10

إيميل رقم : 64052

## شهادة تسجيل عضوية

نوع الرخصة التجارية	رقم العضوية	42359
رقم رخصة البلدية 43900	رقم السجل التجاري	35153
	رقم السجل المركزي	10199106

إن غرفة تجارة و صناعة عجمان بناءً على قانونها رقم 1 ( لسنة 1977م

قد سجلت

القوس الذهبي للديكور / ذ.م.م

GOLDEN ARCH DECOR/ L.L.C.

لممارسة النشاط

اعمال تنفيذ التصميم الداخلي

الاولى	الفئة
شركة ذات مسؤولية محدودة	الشكل القانوني
14/06/2006	تأسست بتاريخ
10/06/2014	تاريخ الاصدار

تاريخ الانتهاء 12/06/2015



غرفة تجارة و صناعة عجمان





# Certificate of Approval

## Quality Management System

This is to certify that

### Golden Arch Decor LLC

P.O. Box: 16278, Ajman, United Arab Emirates.

has been assessed by Bureau of Assessment Services and hereby attests that the organisation has satisfied that it operates a Quality Management System in accordance with the requirements of

## ISO 9001:2008

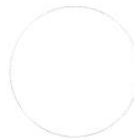
The Quality Management System is applicable to:

**Interior Design & Fit-Out Works, Furniture & Joinery, Decorative Gypsum & Painting Works, Ceilings & Partitions and Steel Fabrication.**

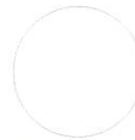
[EA/NACE: 23/36.1 & 28/45.4]

Certification Manager  
Bureau of Assessment Services

Certificate issue date : 28<sup>th</sup> March 2012  
Certificate valid till : 27<sup>th</sup> March 2015  
Certificate No : AE-BAS-Q0001297



1<sup>st</sup> Surveillance  
March 2013



2<sup>nd</sup> Surveillance  
March 2014

The certificate is valid ONLY if the annual surveillance mark is present



Further clarification regarding the scope of the certificate and the applicability of ISO 9001:2008 requirements may be obtained by consulting the organization. This certificate remains valid while the holder maintains the management system in accordance with the standard above, which will be audited by Bureau of Assessment Services through surveillance. This certificate remains the property of Bureau of Assessment Services. Lack of fulfillment of conditions as set out in the certification agreement may render this certificate invalid.

Issuing Country: Bureau of Assessment Services, P.O. Box: 116898, Dubai, United Arab Emirates

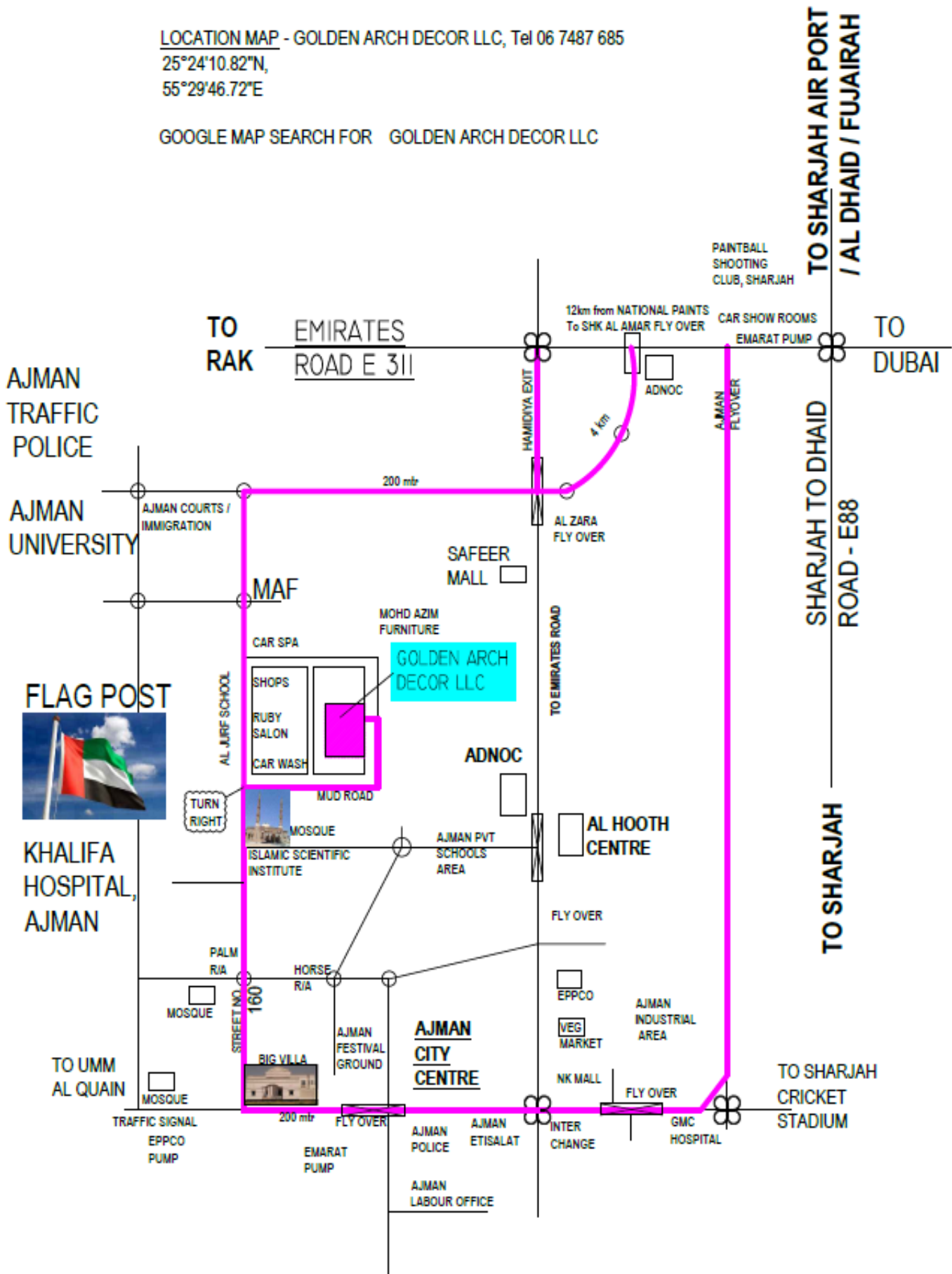
[www.bascertification.com](http://www.bascertification.com)



CERTIFICATE - CERTIFICAT - ZERTIFIKAT - CERTIFICATO

LOCATION MAP - GOLDEN ARCH DECOR LLC, Tel 06 7487 685  
 25°24'10.82"N,  
 55°29'46.72"E

GOOGLE MAP SEARCH FOR GOLDEN ARCH DECOR LLC





## MAJOR PROJECTS EXECUTED (2006 – 2014)

#	Project Name	Consultant	P M / Main Contractor	Developer / Owner
1	Mediclinic- Hili Mall- Al Ain	Chawla Architecture & Consulting Engineers	Golden Arch Décor LLC	Mediclinic
2	MOE, Galleria- GRD cladding	Mall Of the Emirates	Golden Arch Décor LLC	Majid Al Futtaim
3	Mediclinic- OPD Extn, Al Garhoud, Dubai	Plural Architecture + Design	Golden Arch Décor LLC	Mediclinic
4	Milk & Honey Mercato Mall	Trafalgar Technical Services Limited	Golden Arch Décor LLC	Milk & Honey
5	Park Place Tower -18th Floor	Anarchitect	Golden Arch Décor LLC	Bindrai Enterprises
6	Mall Of The Emirates – Lighting Improvement	Mall Of the Emirates	Golden Arch Décor LLC	Majid Al Futtaim
7	Office Fit Outs – Burjuman Office Tower	Samoo, Korea	Golden Arch Décor LLC	Samoo, Korea
8	The Burj Khalifa Tower – GRG Curtain Pelmet, GRG column Cladding & Gypsum Ceiling works	S O M	Turner / DEPA	Emaar
9	13 Stations in Dubai Metro - Red Line - Fire Rated gypsum board partitions & ceilings	Systra Parsons	JT –JV LINDNER-DEPA	R T A
10	5 Stations In Dubai Metro - Green Line -Ceilings	Systra Parsons	JT –JV LINDNER-DEPA	R T A
11	Shoreline Apartments, Palm Jumeirah	ACE International	Turner / DEPA	Nakheel
12	Crown Plaza Hotel – Public Areas – Dubai Festival city	Mazaraki FBK	Al Futtaim Carillion /DEPA	Dubai Festival City LLC
13	Convention Centre, Dubai Festival city	Mazaraki FBK	Al Futtaim Carillion /DEPA	Dubai Festival City LLC
14	Intercon Hotel – Public Areas Dubai Festival city	Mazaraki FBK	Al Futtaim Carillion /DEPA	Dubai Festival City LLC
15	C Wonder - Fit Out works	Nicholas J Tricarico Architect	Al Tayer Stocks	Al TAYER Group

#	Project Name	Consultant	P M / Main Contractor	Developer / Owner
16	Maje - Fit Out works	MAJE	Al Tayer Stocks	Al TAYER Group
17	Alexander Mqueen - Fit Out works	Alexander Mqueen	Al Tayer Stocks	Al TAYER Group
18	Sandro - Fit Out works	Sandro	Al Tayer Stocks	Al TAYER Group
19	Roshana Tower, Dubai Marina – Public areas	Arif & Bin Toak	MACE International	Rashid & Sons Trading
20	Mamas & Papas – Wafi Mall	Mamas Papas	Al Tayer Stocks	Al TAYER Group
21	Kempinski Hotel, Toilets & spas – Ajman	Kempinski Hotel – Ajman	Kempinski Hotel – Ajman	Kempinski Hotel – Ajman
22	Mamas Papas	Mamas Papas	Al Tayer Stocks	Al TAYER Group
23	Emilio Pucci	Emilio Pucci	Al Tayer Stocks	Al TAYER Group
24	Catherine Malandrino & Mathew Williamson	Catherine Malandrino & Mathew Williamson	Al Tayer Stocks	Al TAYER Group
25	Meras Offices level 33& 34 in Monarch office tower and 501 in Burj Business square	Engineers Office	Engineers Office	MERAS DEVELOPMENT
26	Cheil Communications Office in Media City	PICO	Pico International	Cheil Communications
27	I WANNA GO HOME, DUBAI MALL	PICO	Pico International	GILL CAPITALS
28	Crate & barrel Shops in Mall of the Emirates / Mirdiff city centre	Crate & barrel	Al Tayer Stocks	Al TAYER Group
29	Hothur Villa	Al Reyami	Al Reyami	Mr. Hothur
30	Family Entertainment centre, Mirdiff city centre	HOLFORDS	DUTCO / MAP	MAF
31	Zadina – Premium Date store in Abudhabi, Khalidiya.	20/20 UK	AMANA	AL FOAH DATES
32	Zadina – Premium Date store in Abudhabi - Central Market.	20/20 UK	AMANA	AL FOAH DATES

#	Project Name	Consultant	P M / Main Contractor	Developer / Owner
33	Tribes Restaurant – Mall Of The Emirates	Ds 17 Pvt Ltd - Australia	Al Tayer Stocks	Landmark
34	Al Ghurair City Extension - 2	Arif & Bintoak	Turner / DEPA	Al Ghurair Group
35	HSBC – Middle East Corporate Office.	Edge	Al Tayer Stocks	HSBC
36	Royal Mirage – 3, Palm Jumeirah	WAI	Mirage Mille / Depa	Rulers Court
37	Abudhabi Women's College – Khalifa City, Abu Dhabi.	Mbh Interiors	EMCO - PICO	Higher Colleges Of Technology
38	Al Nafoorah Restaurant – Jumeirah Emirates Towers	Dwp	DEPA	Emirates Towers
39	Ferrari – Maserati Showroom - Dubai	Fortebis - Italy	Al Tayer Stocks	Al Tayer Motors
40	Lacombe Gallery - Qatar	Adam Basset Design	Pico International	Lacombe Gallery
41	Etisalat – Kifaf Tower		Pico International	Etisalat
42	Rivoli Eye Zone – Dubai Mall	Pico International	Pico International	Rivoli
43	Zayed University - Abudhabi	Pascal & Watson	Al Habtoor Murray Roberts / Hamilton	Mubadala
44	Zadina – Premium Date store in Al Ain Mall.	20/20 UK	AMANA	AMANA
45	Al Bustan – Hotel & Service Apartments Tower	COX	Al Habtoor / Touchwood	Novotel Hotels
46	St Regis Hotel, Saadiyat Island	Woods Bagot	Al Habtoor Murray Roberts / Al Tayer	TDIC
47	GE Offices, Sowwah Square	Ak design	Al Tayer Stocks	Mubadala
48	Spinney's Mall, Jumeirah	Artillery	Al Tayer Stocks	Spinney's
49	Pullman Hotel, Deira City Centre	Waterman	DSW	Majid Al Futtaim
50	Meydan Beach Club, JBR		AMANA / Hamilton	Meydan
51	BVL Gari, Etihad Club, AUH	BVL GARI	Al Tayer Stocks	Al TAYER Group
52	City Hospital, Nuclear Medicine	Hyder Consulting ME Ltd	Al Tayer Stocks	City Hospital

#	Project Name	Consultant	P M / Main Contractor	Developer / Owner
53	Gucci Kids, Dubai Mall	Gucci	Al Tayer Stocks	Al TAYER Group
54	Al Mojil Office, DIFC	Ak design	Al Tayer Stocks	Al Mojil
55	Ocean View Hotel, The Walk ,JBR	Woods Bagot	DSW	Jabel Ali International
56	Carluccios - Concourse-3 , Dubai Airport	Luxe	Al Tayer Stocks	LANDMARK Group
57	TAQA Office, Sowwah Square	Pringle Brandon	KPS	TAQA
58	Blackberry Office, Media City	Pringle Brandon	KPS	RIM
59	Future Pipe Office Fit- Out, DIFC	KPS	KPS	FUTURE PIPE
60	Time Art Office, Business Bay	KPS	KPS	TIME ART
61	Harvey Nichols, Mall of Emirates	Harvey Nichols	Al Tayer Stocks	Al TAYER Group
62	BVL Gari, Sowwah Square	Studio Sclavi Architecture & Design	Al Tayer Stocks	Al TAYER Group
63	Carluccios - TDIC	Luxe	Al Tayer Stocks	LANDMARK Group
64	Royal Bank of Scotland	KPS	KPS	The Royal Bank of Scotland Group
65	C & J Energy Office	KPS	KPS	C & J
66	Bahri Oil Office	KPS	KPS	Bahri Oil & Gas
67	Bank of America	Ak design	KPS	BAML
68	ARMANI CAFÉ - Sowwah Square	Paolo Cipriani Architect	Al Tayer Stocks	Al TAYER Group
69	MOSCHINO - Sowwah Square	Architect Michele De Luncchi S.R.I	Al Tayer Stocks	Al TAYER Group
70	GUCCI- Sowwah Square	Househam Henderson Architects	Al Tayer Stocks	Al TAYER Group
71	AL Asifa Stable 4 Doors	Engineers Office	Engineers Office	Engineers Office
72	Polarcus Office	KPS	KPS	Polarcus
73	Camel Forensic Laboratory	Engineers Office	Engineers Office	Engineers Office

#	Project Name	Consultant	P M / Main Contractor	Developer / Owner
74	Extension of Clinic at Margham	Engineers Office	Engineers Office	Engineers Office
75	Prefab Gym -Guard Room	Engineers Office	Engineers Office	Engineers Office
76	Fazza Stable - Doors & Pergola	Engineers Office	Engineers Office	Engineers Office
77	Conversion of Staff Accommodation to Garment Store	Engineers Office	Engineers Office	Engineers Office
78	Falcon House Mirrors	Engineers Office	Engineers Office	Engineers Office
79	Zabeel Facilities	Engineers Office	Engineers Office	Engineers Office
80	Invest Corp - Sowwah Square	Michael Prodanon Associates Inc Architects	Al Tayer Stocks	Invest Corp Bank
81	BBVA Office Fitout	Al Tayer Stocks	Al Tayer Stocks	BBVA
82	Palm, Fond M, Villa 122	Andre	Huts Contracting LLC	
83	4 Bedroom Villa	Engineers Office	Engineers Office	Engineers Office
84	Camelicious Milking Parlor	Engineers Office	Engineers Office	Engineers Office
85	Ericsson Refurbishment	KPS	KPS	Eicsson
86	First Gulf Bank	Ideal Design Engineering Consultant LLC	Al Tayer Stocks	First Gulf Bank
87	CYLDE & CO Office Fitout	KPS	KPS	Clyde & Co
88	Farglory Middle East Regional Headquarters & Sales Office	FUKSAS	KPS	Farglory
89	CITY Hospital - Emergency Dept Refurb	Hyder Consulting ME Ltd	Al Tayer Stocks	City Hospital
90	Middle East Shipping Management Office	KPS	KPS	Middle East Ship Management
91	Al Ghail Villa - RAK	Emirates Heavy Engineering	Emirates Heavy Engineering	Micro Gulf Project
92	Construction of Warehouse at PVG	Engineers Office	Engineers Office	Engineers Office

#	Project Name	Consultant	P M / Main Contractor	Developer / Owner
93	Action Hotel Company DIFC Office	Broadway Interiors	Broadway Interiors	Action Hotels
94	HDFC Bank	Broadway Interiors	Broadway Interiors	HDFC BANK
95	200 Staff Accommodation at NAS	Engineers Office	Engineers Office	Engineers Office
96	Construction of New Staff Accommodation at Umm Nahad	Engineers Office	Engineers Office	Engineers Office
97	Saraya Residential Tower	Ramboll Middle East Ltd	Arcane	Saraya
98	Construction of Wash Room at Ladies Accommodation at Zabeel	Engineers Office	Engineers Office	Engineers Office
99	24 Stall Desert Barn - NAS	Engineers Office	Engineers Office	Engineers Office
100	Dubai Health City Hotel & Residence - Handrail	RMJM	Al Basti & Mukta LLC	Wasl LLC
101	Dubai Duty Free Paper Work Station	RCD	RCD	Dubai Duty Free
102	Refurbishment to Akzo Nobel Office Al Quoz	Al Tayer Stocks	Al Tayer Stocks	Akzo Nobel
103	Zoom Market at Deira	Enoc	Al Tayer Stocks	Enoc
104	Fortnum & Mason	RMJM	Al Tayer Stocks	Aedonism Drinks Ltd
105	4 no Stable Complex at Al Lissaili	Engineers Office	Engineers Office	Engineers Office
106	Construction of Fisherman Majlis at Jumeriah	Engineers Office	Engineers Office	Engineers Office
107	F & F Al Gurair Centre	F&F	Blue Print	Al Futtaim Group
108	Cut Restaurant	DSA Architects International	Al Tayer Stocks	Emmar
109	Zoom DNI	Enoc	Al Tayer Stocks	Enoc
110	Construction of Meal Worm	Engineers Office	Engineers Office	Engineers Office
111	Construction of Mosque & Ablution Bldg at Endurance Villa	Engineers Office	Engineers Office	Engineers Office
112	Changing Room & Wash Room at Al Qudra	Engineers Office	Engineers Office	Engineers Office



#	Project Name	Consultant	P M / Main Contractor	Developer / Owner
113	Horizon Tower Mock Up	Dakota Architecture & Interior Architecture	Al Tayer Stocks	Rani Investments
114	Zoom Blue Bay	Enoc	Al Tayer Stocks	Enoc
115	Zoom Latifa Tower	Enoc	Al Tayer Stocks	Enoc
116	Magnolia Bakery, The Beach, JBR Walk	CKR	Al Tayer Stocks	Magnolia Bakery
117	New PICU Unit at City Hospital	Hyder Consulting ME Ltd	Al Tayer Stocks	Mediclinic
118	Zoom at Academic Centre	Enoc	Al Tayer Stocks	Enoc
119	Construction of Shopping centre at Al Qudra	Engineers Office	Engineers Office	Engineers Office
120	Bank of America - Bur Dubai	Ak design	KPS	BAML
121	Construction of Falcon House & Falcon Rooms in Lehabab	Engineers Office	Engineers Office	Engineers Office
122	Guess Denim at Dubai Mall	Studio Di Architettura Giraldi Associati	Blue Print	Al Futtaim Group
123	Construction of Horse Pools at Fazza Stable	Engineers Office	Engineers Office	Engineers Office
124	Construction of Camel Swimming Pool at Nas	Engineers Office	Engineers Office	Engineers Office